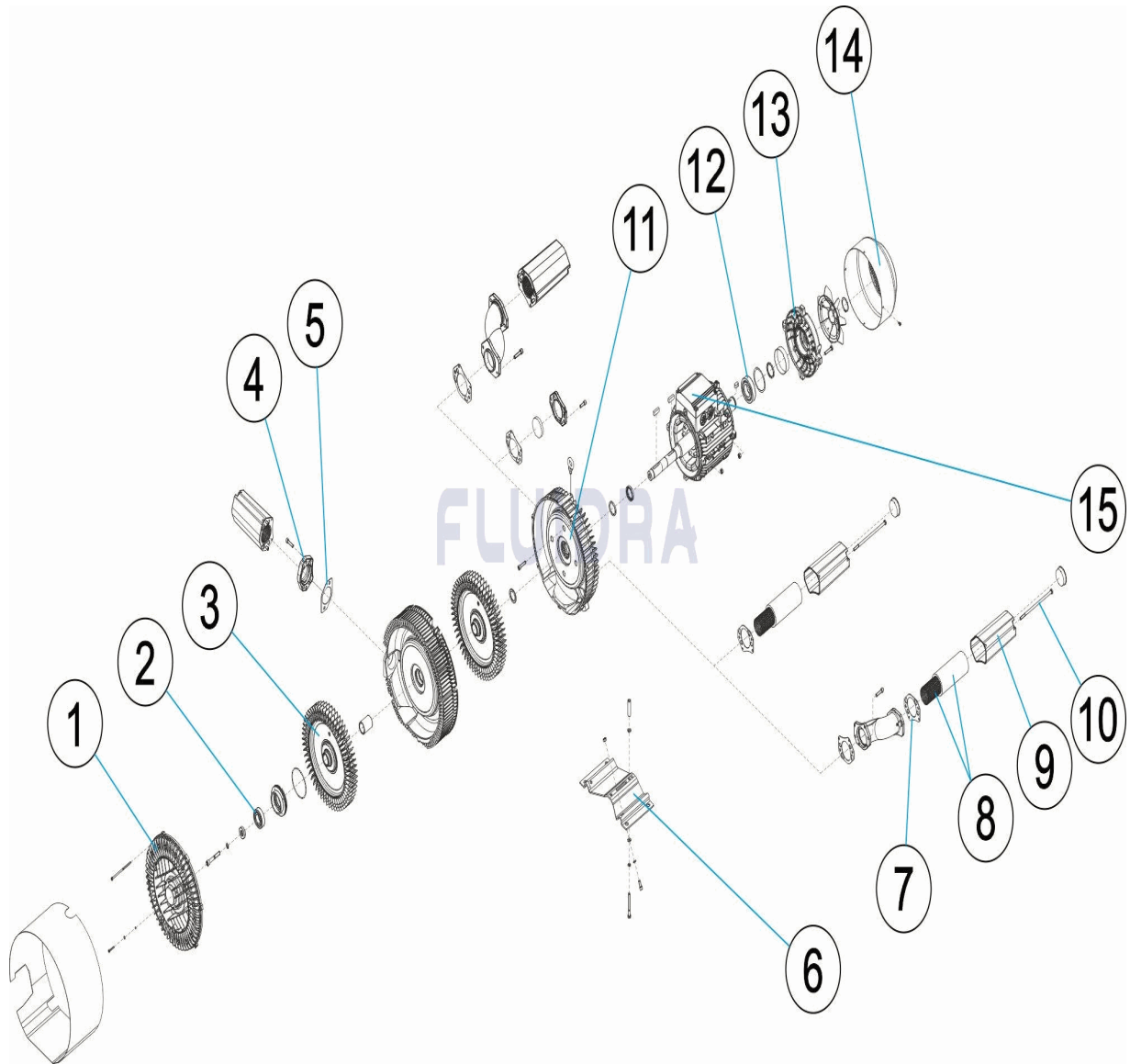


CODIGO 31096-2450, 33972-2450

DESCRIPCION: BOMBA SOPLANTE DOBLE ETAPA



ESPAÑOL

POS	CODIGO	DESCRIPCION	CANTIDAD	POS	CODIGO	DESCRIPCION	CANTIDAD
1	31093R0006	TAPA SOPLANTE 1,6 - 2.2 KW		10	* 31090R0004	TORNILLO SUJECCION SILENCIADOR	
2	31093R0005	RODAMIENTO FRONTAL		10	* 31090R0016	TORN. SUJECCION SILENCIADOR 1,3 - 1.6 l	
3	33972R0000	RODETE SOPLANTE		11	* 31096R0000	CUERPO SOPLANTE 4,3 KW	
4	31093R0001	JUNTA ANCLAJE SILENCIADOR		11	* 33972R0001	CUERPO SOPLANTE 5,5 KW	
5	31094R0002	ANCLAJE SILENCIADOR 2"		12	* 31090R0000	RODAMIENTO	
6	31093R0007	BASE SOPLANTE 1,6 - 2.2 KW		12	* 31097R0002	RODAMIENTO TRASERO 5,5 - 7,5 KW	
7	31090R0001	JUNTA SILENCIADOR		13	* 31095R0003	VENTILADOR 3 KW	
8	* 4405060000	TUBO SILENCIADOR + ESPUMA 2"		13	* 31097R0011	VENTILADOR 5,5 - 7,5 KW	
8	* 4405060001	TUBO SILENCIADOR + ESPUMA 2"		14	* 31096R0001	TAPA VENTILADR 4,3 KW	
9	* 31090R0003	CARCASA SILENCIADOR		14	* 33974R0010	TAPA VENTILADOR 12,5 KW	
9	* 31090R0007	CARCASA SILENCIADOR		15	31096R0002	PLACA DE BORNES	

CODIGO 31096-2450, 33972-2450

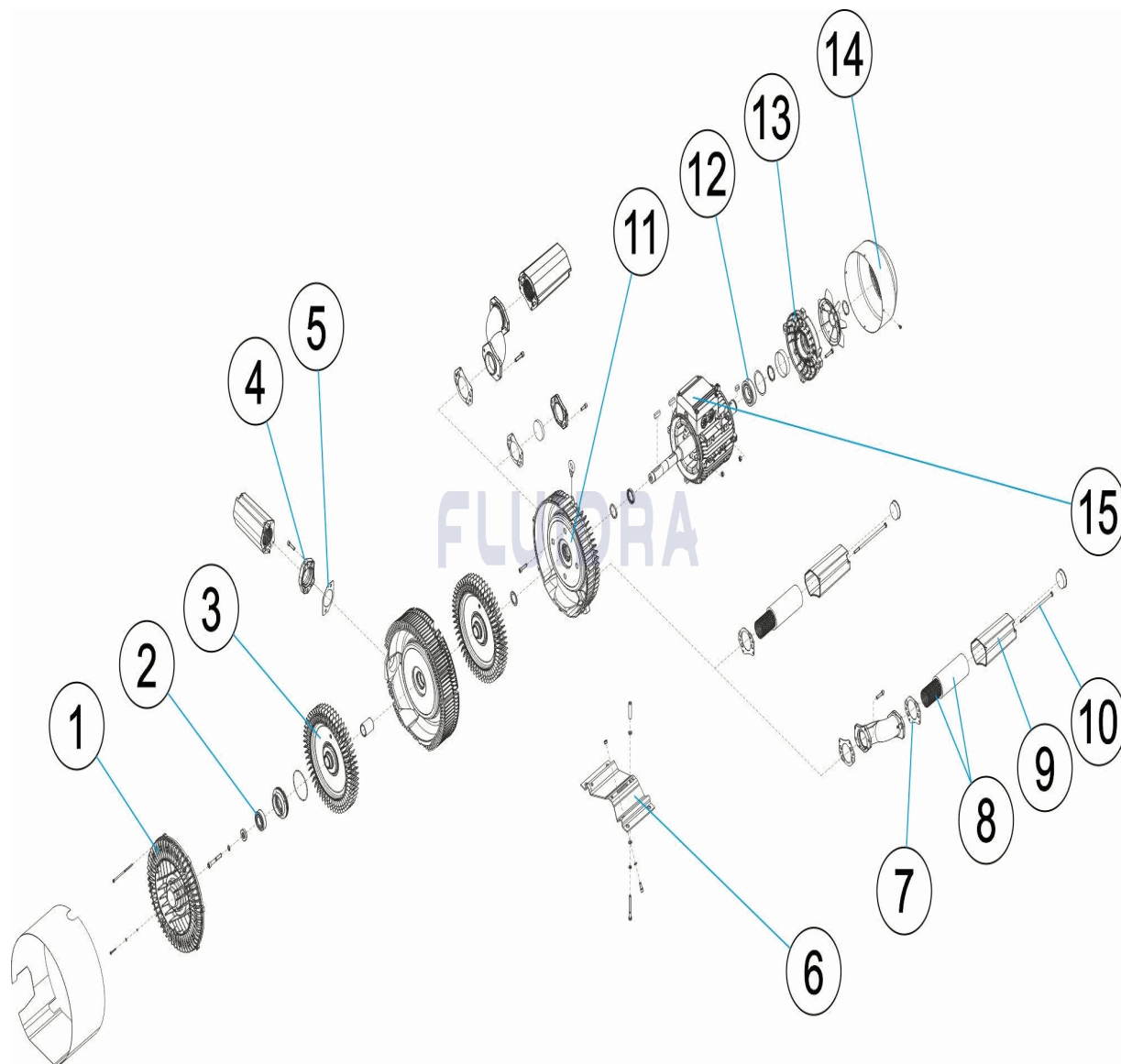
DESCRIPCION: BOMBA SOPLANTE DOBLE ETAPA

OBSERVACIONES

POS	CODIGO	OBSERVACIONES
8	* 4405060000	PARA: 33972-2450 ASPIRACIÓN / ASPIRATION
8	* 4405060001	PARA: 31096-2450, 33972-2450
9	* 31090R0003	PARA: 33972-2450 ASPIRACIÓN / ASPIRATION
9	* 31090R0007	PARA: 31096-2450, 33972-2450
10	* 31090R0004	PARA: 33972-2450 ASPIRACIÓN / ASPIRATION
10	* 31090R0016	PARA: 31096-2450, 33972-2450 EN LA 33972-2450 SÓLO EN IMPULSIÓN / ON 33972-2450 ONLY IN IMPULSION
11	* 31096R0000	PARA: 31096-2450
11	* 33972R0001	PARA: 33972-2450
12	* 31090R0000	PARA: 31096-2450
12	* 31097R0002	PARA: 33972-2450
13	* 31095R0003	PARA: 31096-2450
13	* 31097R0011	PARA: 33972-2450
14	* 31096R0001	PARA: 31096-2450
14	* 33974R0010	PARA: 33972-2450

CODE 31096-2450, 33972-2450

DESCRIPTION: POMPE SOUFLANTE DOUBLE ÉTAPE



FRANCAIS

POS	CODE	DESCRIPTION	QUANTITE	POS	CODE	DESCRIPTION	QUANTITE
1	31093R0006	COUVERCLE SOUFLANTE 1,6 - 2.2 KW		10	* 31090R0004	VIS FIXATION SILENCIEUX	
2	31093R0005	ROULEMENT AVANT		10	* 31090R0016	VIS FIXATION SILENCIEUX 1,3 - 1.6 KW	
3	33972R0000	ROUE SOUFLANTE		11	* 31096R0000	CORPS SOUFLANTE 4,3 KW	
4	31093R0001	JOINT FIXATION SILENCIEUX		11	* 33972R0001	CORPS SOUFLANTE 5,5 KW	
5	31094R0002	FIXATION SILENCIEUX 2"		12	* 31090R0000	ROULEMENT	
6	31093R0007	BASE SOUFLANTE 1,6 - 2.2 KW		12	* 31097R0002	ROULEMENT ARRIÈRE 5,5 - 7,5 KW	
7	31090R0001	JOINT SILENCIEUX		13	* 31095R0003	VENTILATEUR 3 KW	
8	* 4405060000	TUBE SILENCIEUX + MOUSSE 2"		13	* 31097R0011	VENTILATEUR 5,5 - 7,5 KW	
8	* 4405060001	TUBE SILENCIEUX + MOUSSE 2"		14	* 31096R0001	COUVERCLE VENTILATEUR 4,3 KW	
9	* 31090R0003	CARCASSE SILENCIEUX		14	* 33974R0010	COUVERCLE VENTILATEUR 12,5 KW	
9	* 31090R0007	CARCASSE SILENCIEUX		15	31096R0002	PLAQUE À BORNES	

CODE **31096-2450, 33972-2450**

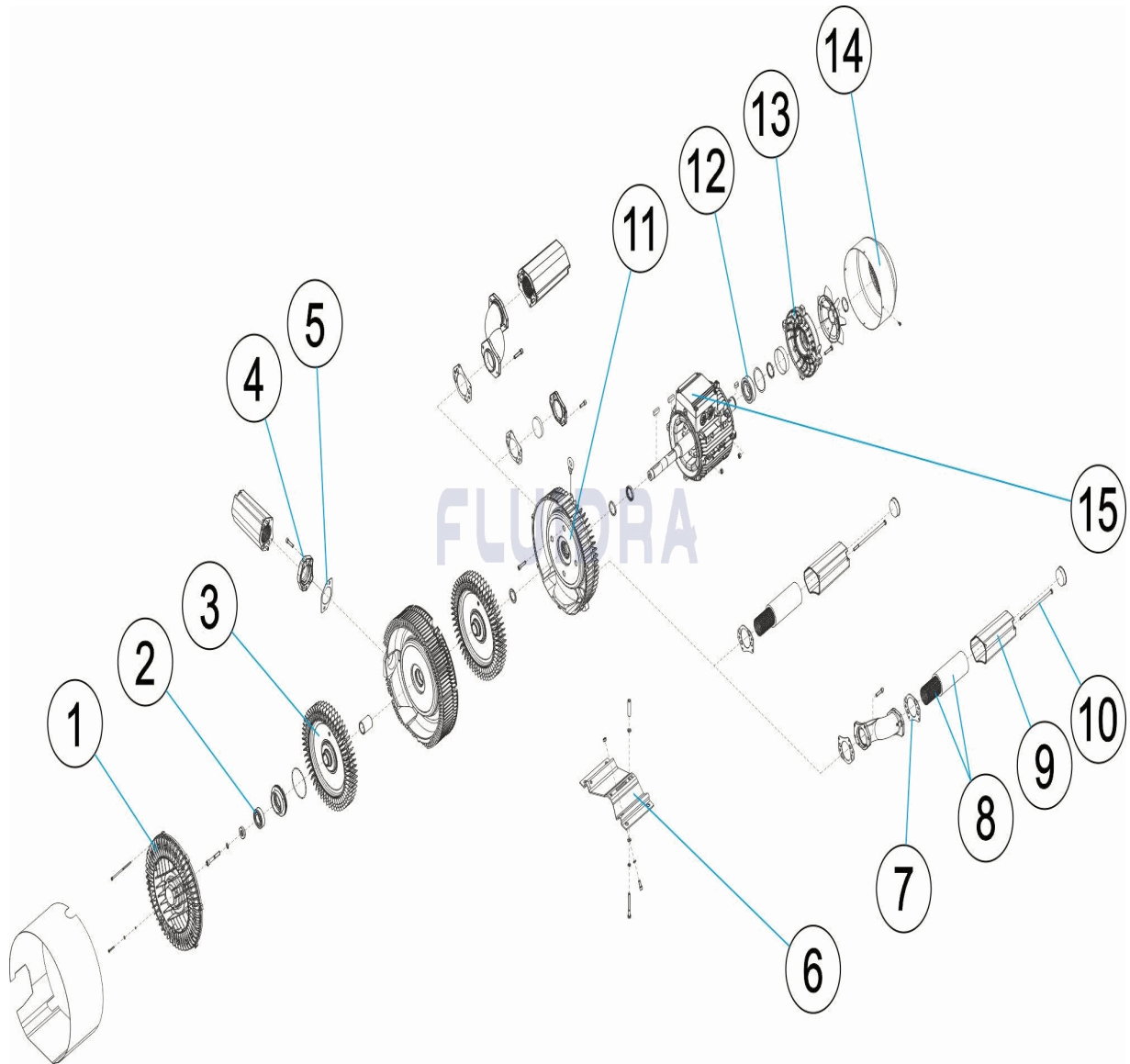
DESCRIPTION: **POMPE SOUFLANTE DOUBLE ÉTAPE**

OBSERVATIONS

POS	CODE	OBSERVATIONS
8	* 4405060000	POUR: 33972-2450 ASPIRACIÓN / ASPIRATION
8	* 4405060001	POUR: 31096-2450, 33972-2450
9	* 31090R0003	POUR: 33972-2450 ASPIRACIÓN / ASPIRATION
9	* 31090R0007	POUR: 31096-2450, 33972-2450
10	* 31090R0004	POUR: 33972-2450 ASPIRACIÓN / ASPIRATION
10	* 31090R0016	POUR: 31096-2450, 33972-2450 EN LA 33972-2450 SÓLO EN IMPULSIÓN / ON 33972-2450 ONLY IN IMPULSION
11	* 31096R0000	POUR: 31096-2450
11	* 33972R0001	POUR: 33972-2450
12	* 31090R0000	POUR: 31096-2450
12	* 31097R0002	POUR: 33972-2450
13	* 31095R0003	POUR: 31096-2450
13	* 31097R0011	POUR: 33972-2450
14	* 31096R0001	POUR: 31096-2450
14	* 33974R0010	POUR: 33972-2450

CODE **31096-2450, 33972-2450**

DESCRIPTION: **DOUBLE STAGE BLOWER PUMP**



ENGLISH

POS	CODE	DESCRIPTION	QUANTITY	POS	CODE	DESCRIPTION	QUANTITY
1	31093R0006	BLOWER COVER 1,6 - 2.2 KW		10	* 31090R0004	SILENCER SECURING SCREW	
2	31093R0005	FRONT BEARING		10	* 31090R0016	SILENCER SECURING SCREW 1,3 - 1.6 KW	
3	33972R0000	BLOWER IMPELLER		11	* 31096R0000	BLOWER BODY 4,3 KW	
4	31093R0001	SILENCER FITTING GASKET		11	* 33972R0001	BLOWER BODY 5,5 KW	
5	31094R0002	SILENCER FITTING 2"		12	* 31090R0000	BEARING	
6	31093R0007	BLOWER BASE 1,6 - 2.2 KW		12	* 31097R0002	REAR BEARING 5,5 - 7,5 KW	
7	31090R0001	SILENCER GASKET		13	* 31095R0003	FAN 3 KW	
8	* 4405060000	SILENCER TUBE + FOAM 2"		13	* 31097R0011	FAN 5,5 - 7,5 KW	
8	* 4405060001	SILENCER TUBE + FOAM 2"		14	* 31096R0001	FAN COVER 4,3 KW	
9	* 31090R0003	SILENCER BODY		14	* 33974R0010	FAN COVER 12.5 KW	
9	* 31090R0007	SILENCER BODY		15	31096R0002	TERMINAL PLATE	

CODE **31096-2450, 33972-2450**

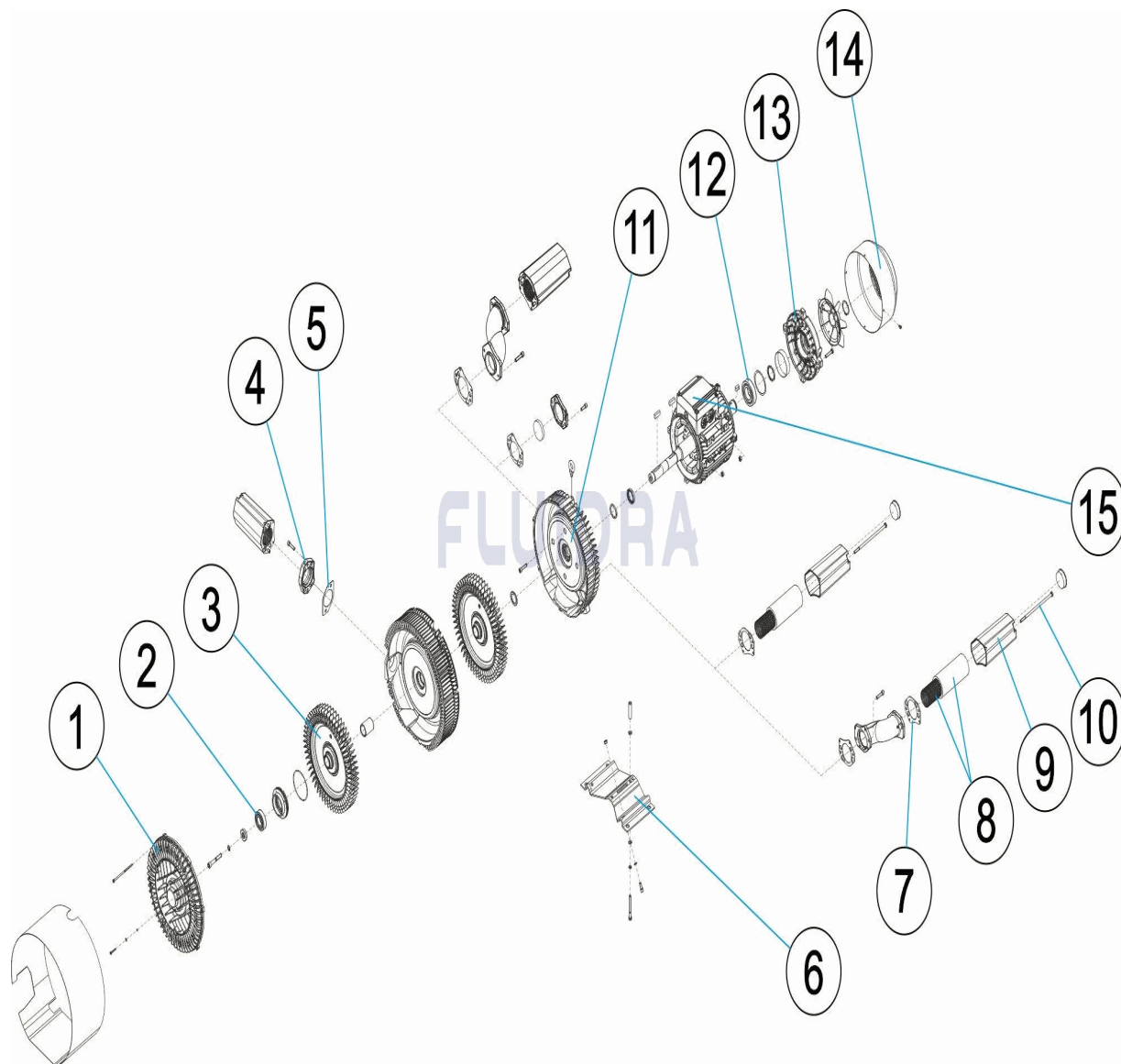
DESCRIPTION: **DOUBLE STAGE BLOWER PUMP**

OBSERVATIONS

POS	CODE	OBSERVATIONS
8	* 4405060000	FOR: 33972-2450 ASPIRACIÓN / ASPIRATION
8	* 4405060001	FOR: 31096-2450, 33972-2450
9	* 31090R0003	FOR: 33972-2450 ASPIRACIÓN / ASPIRATION
9	* 31090R0007	FOR: 31096-2450, 33972-2450
10	* 31090R0004	FOR: 33972-2450 ASPIRACIÓN / ASPIRATION
10	* 31090R0016	FOR: 31096-2450, 33972-2450 EN LA 33972-2450 SÓLO EN IMPULSIÓN / ON 33972-2450 ONLY IN IMPULSION
11	* 31096R0000	FOR: 31096-2450
11	* 33972R0001	FOR: 33972-2450
12	* 31090R0000	FOR: 31096-2450
12	* 31097R0002	FOR: 33972-2450
13	* 31095R0003	FOR: 31096-2450
13	* 31097R0011	FOR: 33972-2450
14	* 31096R0001	FOR: 31096-2450
14	* 33974R0010	FOR: 33972-2450

CODICE 31096-2450, 33972-2450

DESCRIZIONE: POMPA SOFFIANTE FASE DOPPIA



ITALIANO

POS	CODICE	DESCRIZIONE	QUANTITA'	POS	CODICE	DESCRIZIONE	QUANTITA'
1	31093R0006	COPERCHIO DELLA POMPA SOFFIANTE 1,1		10	* 31090R0004	VITE DI FISSAGGIO SILENZIATORE	
2	31093R0005	CUSCINETTO ANTERIORE		10	* 31090R0016	VITE DI FISSAGGIO SILENZIATORE 1,3 - 1.6	
3	33972R0000	GIRANTE DELLA POMPA SOFFIANTE		11	* 31096R0000	CORPO DELLA POMPA SOFFIANTE 4,3 KW	
4	31093R0001	GIUNTURA DI ANCORAGGIO SILENZIATOR		11	* 33972R0001	CORPO DELLA POMPA SOFFIANTE 5,5 KW	
5	31094R0002	ANCORAGGIO SILENZIATORE 2"		12	* 31090R0000	CUSCINETTO	
6	31093R0007	BASE DELLA POMPA SOFFIANTE 1,6 - 2.2 f		12	* 31097R0002	CUSCINETTO POSTERIORE 5,5 - 7,5 KW	
7	31090R0001	GIUNTURA SILENZIATORE		13	* 31095R0003	VENTILATORE 3 KW	
8	* 4405060000	TUBO SILENZIATORE + SCHIUMA 2"		13	* 31097R0011	VENTILATORE 5,5 - 7,5 KW	
8	* 4405060001	TUBO SILENZIATORE + SCHIUMA 2"		14	* 31096R0001	COPERCHIO VENTILATORE 4,3 KW	
9	* 31090R0003	SCATOLA SILENZIATORE		14	* 33974R0010	COPERCHIO VENTILATORE 12,5 KW	
9	* 31090R0007	SCATOLA SILENZIATORE		15	31096R0002	MORSETTIERA ELETTRICA	

CODICE **31096-2450, 33972-2450**

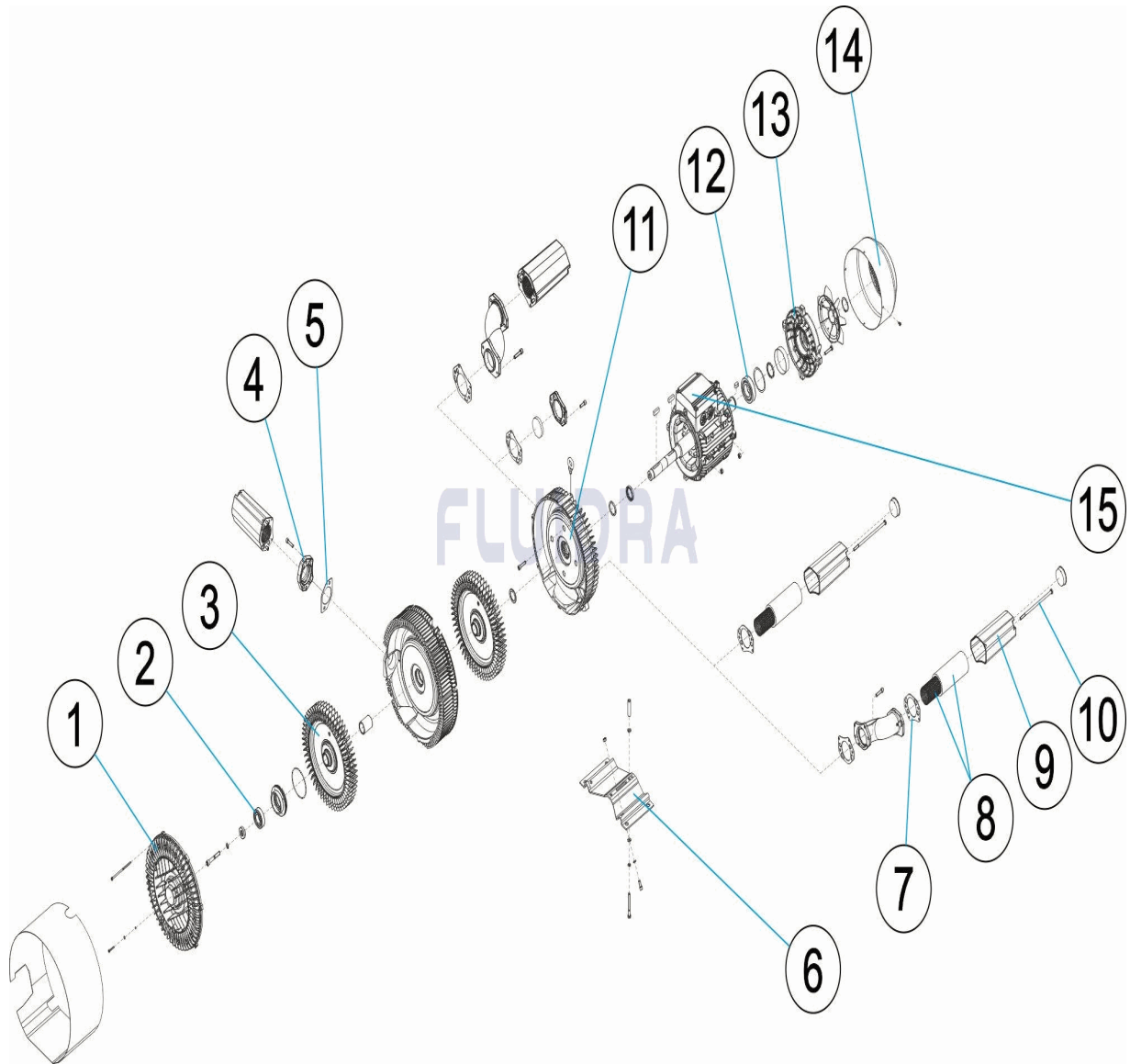
DESCRIZIONE: **POMPA SOFFIANTE FASE DOPPIA**

OSSERVAZIONI

POS	CODICE	OSSERVAZIONI
8	* 4405060000	PER: 33972-2450 ASPIRACIÓN / ASPIRATION
8	* 4405060001	PER: 31096-2450, 33972-2450
9	* 31090R0003	PER: 33972-2450 ASPIRACIÓN / ASPIRATION
9	* 31090R0007	PER: 31096-2450, 33972-2450
10	* 31090R0004	PER: 33972-2450 ASPIRACIÓN / ASPIRATION
10	* 31090R0016	PER: 31096-2450, 33972-2450 EN LA 33972-2450 SÓLO EN IMPULSIÓN / ON 33972-2450 ONLY IN IMPULSION
11	* 31096R0000	PER: 31096-2450
11	* 33972R0001	PER: 33972-2450
12	* 31090R0000	PER: 31096-2450
12	* 31097R0002	PER: 33972-2450
13	* 31095R0003	PER: 31096-2450
13	* 31097R0011	PER: 33972-2450
14	* 31096R0001	PER: 31096-2450
14	* 33974R0010	PER: 33972-2450

CODE **31096-2450, 33972-2450**

BESCHREIBUNG: **ZWEISTUFIGE GEBLÄSEPUMPE**



DEUTSCH

POS	CODE	BESCHREIBUNG	MENGE	POS	CODE	BESCHREIBUNG	MENGE
1	31093R0006	ABDECKUNG GEBLÄSE 1,6 - 2,2 KW		10	* 31090R0004	BEFESTIGUNGSSCHRAUBE SCHWINGUNG	
2	31093R0005	WÄLZLAGER VORNE		10	* 31090R0016	BEFESTIGUNGSSCHRAUBE SCHWINGUNG	
3	33972R0000	GEBLÄSELAUFRAD		11	* 31096R0000	GEBLÄSEGEHÄUSE 4,3 KW	
4	31093R0001	DICHTUNG VERANKERUNG SCHWINGUNG		11	* 33972R0001	GEBLÄSEGEHÄUSE 5,5 KW	
5	31094R0002	VERANKERUNG SCHWINGUNGSDÄMPFER		12	* 31090R0000	WÄLZLAGER	
6	31093R0007	GEBLÄSEBASIS 1,6 - 2,2 KW		12	* 31097R0002	HINTERES WÄLZLAGER 5,5 - 7,5 KW	
7	31090R0001	DICHTUNG SCHWINGUNGSDÄMPFER		13	* 31095R0003	VENTILATOR 3 KW	
8	* 4405060000	ROHR SCHWINGUNGSDÄMPFER + SCHAU		13	* 31097R0011	VENTILATOR 5,5 - 7,5 KW	
8	* 4405060001	ROHR SCHWINGUNGSDÄMPFER + SCHAU		14	* 31096R0001	DECKLE VENTILADOR 4,3 KW	
9	* 31090R0003	GEHÄUSE SCHWINGUNGSDÄMPFER		14	* 33974R0010	VENTILATORDECKEL 12,5 KW	
9	* 31090R0007	GEHÄUSE SCHWINGUNGSDÄMPFER		15	31096R0002	ANSCHLUSSPLATTE	

CODE **31096-2450, 33972-2450**

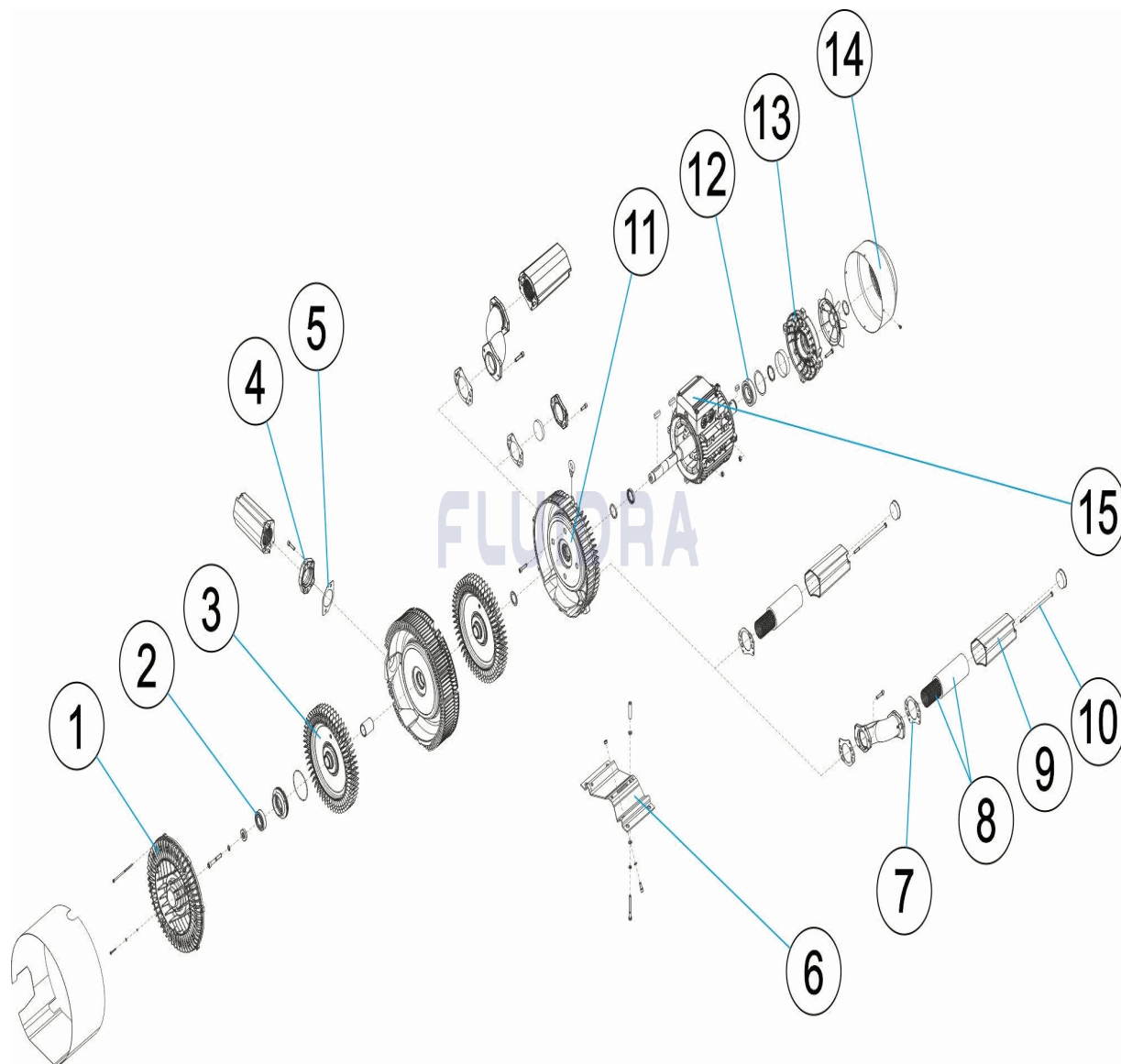
BESCHREIBUNG: **ZWEISTUFIGE GEBLÄSEPUMPE**

HINWEISE

POS	CODE	HINWEISE
8	* 4405060000	FÜR: 33972-2450 ASPIRACIÓN / ASPIRATION
8	* 4405060001	FÜR: 31096-2450, 33972-2450
9	* 31090R0003	FÜR: 33972-2450 ASPIRACIÓN / ASPIRATION
9	* 31090R0007	FÜR: 31096-2450, 33972-2450
10	* 31090R0004	FÜR: 33972-2450 ASPIRACIÓN / ASPIRATION
10	* 31090R0016	FÜR: 31096-2450, 33972-2450 EN LA 33972-2450 SÓLO EN IMPULSIÓN / ON 33972-2450 ONLY IN IMPULSION
11	* 31096R0000	FÜR: 31096-2450
11	* 33972R0001	FÜR: 33972-2450
12	* 31090R0000	FÜR: 31096-2450
12	* 31097R0002	FÜR: 33972-2450
13	* 31095R0003	FÜR: 31096-2450
13	* 31097R0011	FÜR: 33972-2450
14	* 31096R0001	FÜR: 31096-2450
14	* 33974R0010	FÜR: 33972-2450

CODIGO 31096-2450, 33972-2450

DESCRIÇÃO: BOMBA DE VÁCUO ETAPA DUPLA



PORTUGUES

POS	CODIGO	DESCRIÇÃO	JANTIDADE	POS	CODIGO	DESCRIÇÃO	JANTIDADE
1	31093R0006	TAMPA BOMBA DE VÁCUO 1,6 - 2.2 KW		10	* 31090R0004	PARAFUSO FIXAÇÃO SILENCIADOR	
2	31093R0005	ROLAMENTO FRONTAL		10	* 31090R0016	PARAFUSO FIXAÇÃO SILENCIADOR, 1,3 - 1.	
3	33972R0000	ROLETE BOMBA DE VÁCUO		11	* 31096R0000	CORPO BOMBA DE VÁCUO 4,3 KW	
4	31093R0001	JUNTA ANCORAGEM SILENCIADOR		11	* 33972R0001	CORPO BOMBA DE VÁCUO 5,5 KW	
5	31094R0002	JUNTA ANCORAGEM SILENCIADOR 2"		12	* 31090R0000	CUSCINETTO	
6	31093R0007	BASE BOMBA DE VÁCUO 1,6 - 2.2 KW		12	* 31097R0002	ROLAMENTO TRASEIRO 5,5 - 7,5 KW	
7	31090R0001	JUNTA SILENCIADOR		13	* 31095R0003	VENTILADOR 3 KW	
8	* 4405060000	TUBO SILENCIADOR + ESPUMA 2"		13	* 31097R0011	VENTILADOR 5,5 - 7,5 KW	
8	* 4405060001	TUBO SILENCIADOR + ESPUMA 2"		14	* 31096R0001	TAMPA VENTILADOR 4,3 KW	
9	* 31090R0003	CARÇA SILENCIADOR		14	* 33974R0010	TAMPA VENTILADOR 12,5 KW	
9	* 31090R0007	CARÇA SILENCIADOR		15	31096R0002	PLACA DE TERMINAIS	

CODIGO 31096-2450, 33972-2450

DESCRICÃO: BOMBA DE VÁCUO ETAPA DUPLA

OBSERVAÇÕES

POS	CODIGO	OBSERVAÇÕES
8	* 4405060000	PARA: 33972-2450 ASPIRACIÓN / ASPIRATION
8	* 4405060001	PARA: 31096-2450, 33972-2450
9	* 31090R0003	PARA: 33972-2450 ASPIRACIÓN / ASPIRATION
9	* 31090R0007	PARA: 31096-2450, 33972-2450
10	* 31090R0004	PARA: 33972-2450 ASPIRACIÓN / ASPIRATION
10	* 31090R0016	PARA: 31096-2450, 33972-2450 EN LA 33972-2450 SÓLO EN IMPULSIÓN / ON 33972-2450 ONLY IN IMPULSION
11	* 31096R0000	PARA: 31096-2450
11	* 33972R0001	PARA: 33972-2450
12	* 31090R0000	PARA: 31096-2450
12	* 31097R0002	PARA: 33972-2450
13	* 31095R0003	PARA: 31096-2450
13	* 31097R0011	PARA: 33972-2450
14	* 31096R0001	PARA: 31096-2450
14	* 33974R0010	PARA: 33972-2450