

CODIGO 11277, 15219, 28619, 28620, 28621, 28622

DESCRIPCION: ELEVADOR HIDRÁULICO



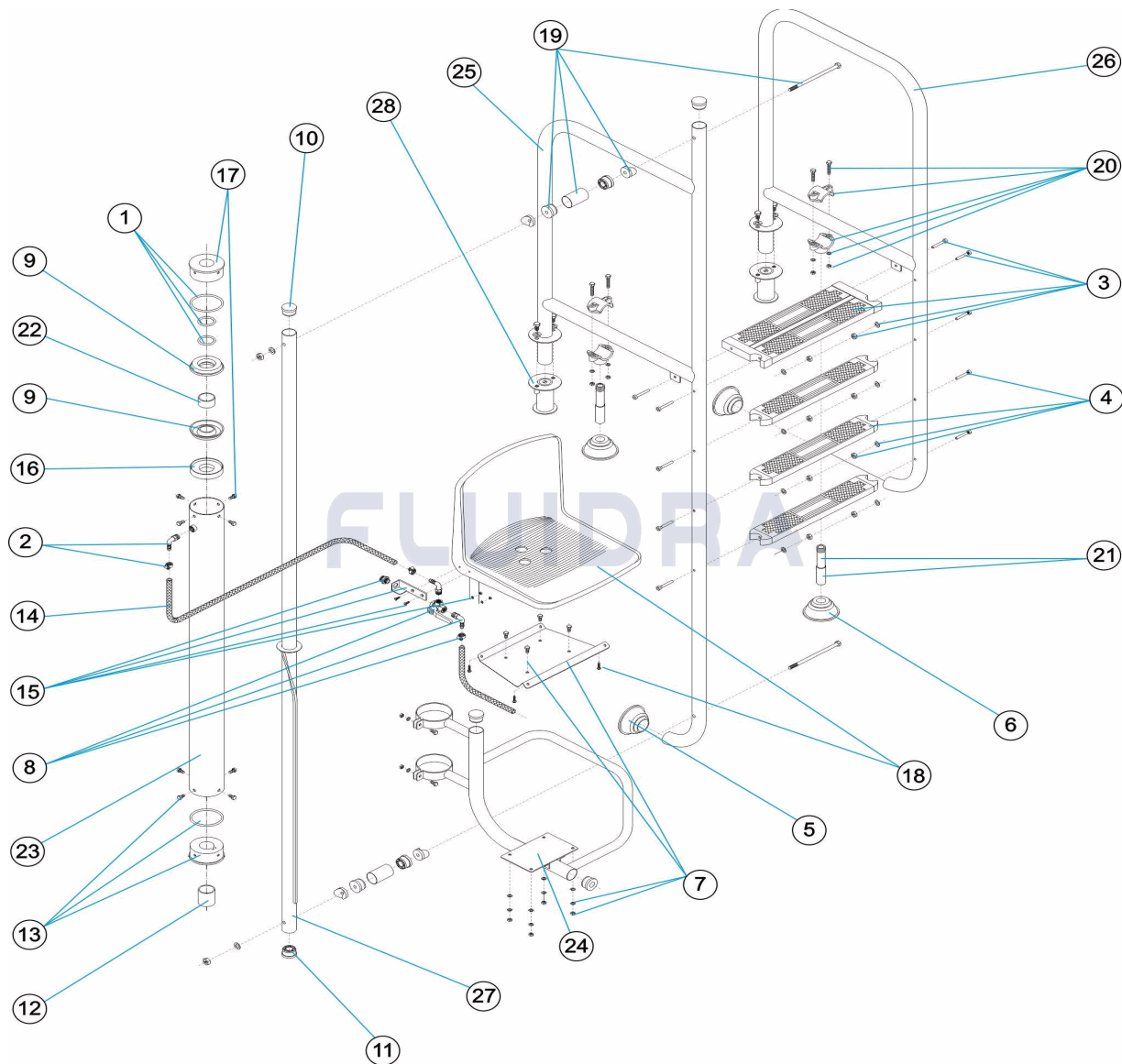
Аквалуп ГК

+7 (777) 1401744

aquapool66@mail.ru,

www.aquapool.kz

www.poolaqua.ru



ESPAÑOL

| POS | CODIGO | DESCRIPCION | CANTIDAD | POS | CODIGO | DESCRIPCION | CANTIDAD |
|-----|------------|-------------------------|----------|-----|--------------|------------------------------|----------|
| 1 | 4401011501 | JUNTAS ELEVADOR | | 16 | 4401011516 | APOYO JUNTA | |
| 2 | 4401011502 | CODO Y BRIDA | | 17 | 4401011517 | TAPA GUIA SUPERIOR | |
| 3 | 4401010805 | PELDAÑO SEGURIDAD 316 | | 18 | 4401011518 | ASIENTO | |
| 4 | 4401010104 | PELDAÑO LUXE 316 | | 19 | 4401011519 | CJTO. ENLACE UNION | |
| 5 | 4401010501 | TOPE ARTICULADO | | 20 | 4401011520 | BRIDA APOYO | |
| 6 | 4401011506 | TOPE ARTICULADO D.28 | | 21 | 4401011521 | TUBO APOYO | |
| 7 | 4401011507 | PLACA ASIENTO | | 22 | 4401011505 | CASQUILLO TOPE INFERIOR | |
| 8 | 4401011508 | VALVULA 3 VIAS COMPLETA | | 23 | 11277R0600 | CILINDRO ELEVADOR HIDRAULICO | |
| 9 | 4401011509 | JUNTA ELEVADOR | | 24 | 11277R0400 | SOPORTE ASIENTO | |
| 10 | 4401070208 | TAPON D.43 | | 25 | * 11277R0800 | PASAMANO LARGO L=1000 | |
| 11 | 4401050402 | CASQUILLOS GUIA | | 25 | * 15219R0100 | PASAMANO LARGO L=650 | |
| 12 | 4401011512 | CASQUILLO DE SEGURIDAD | | 26 | * 11277R0900 | PASAMANO CORTO L=1000 | |
| 13 | 4401011513 | CASQUILLO GUIA | | 26 | * 15219R0200 | PASAMANO CORTO L=650 | |

CODIGO **11277, 15219, 28619, 28620, 28621, 28622**

DESCRIPCION: **ELEVADOR HIDRÁULICO**



| | | | | | |
|----|------------|--------------------|----|------------|--------------------------------|
| 14 | 4401011514 | TUBO ENTRADA 0,9 M | 27 | 11277R0100 | CONJUNTO TUBO GUIA |
| 15 | 4401011515 | SOPORTE VALVULA | 28 | 00143 | ANCLAJE FIJACION CON TORNILLOS |

CODIGO **11277, 15219, 28619, 28620, 28621, 28622**

DESCRIPCION: **ELEVADOR HIDRÁULICO**

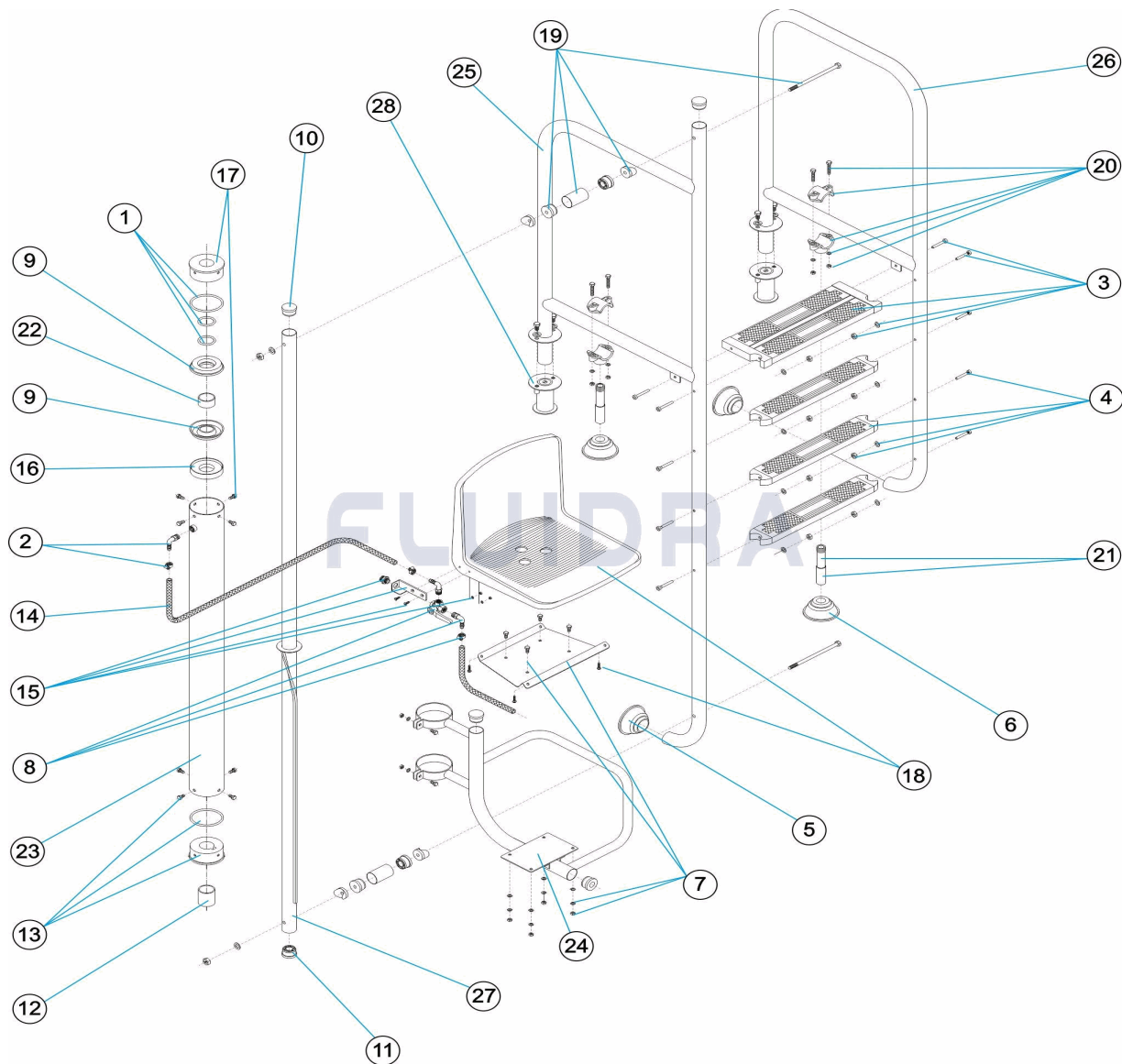


OBSERVACIONES

| POS | CODIGO | OBSERVACIONES |
|-----|--------------|--------------------|
| 25 | * 11277R0800 | PARA: 11277, 28620 |
| 25 | * 15219R0100 | PARA: 15219, 28619 |
| 26 | * 11277R0900 | PARA: 11277, 28620 |
| 26 | * 15219R0200 | PARA: 15219, 28619 |

CODE 11277, 15219, 28619, 28620, 28621, 28622

DESCRIPTION: ÉLÉVATEUR HYDRAULIQUE



FRANCAIS

| POS | CODE | DESCRIPTION | QUANTITE | POS | CODE | DESCRIPTION | QUANTITE |
|-----|------------|-----------------------------|----------|-----|--------------|-----------------------------|----------|
| 1 | 4401011501 | JOINT ELEVATEUR | | 16 | 4401011516 | SUPPORT DE JOINT | |
| 2 | 4401011502 | COUDE ET BRIDE | | 17 | 4401011517 | COUVERCLE GUIDE SUPERIEUR | |
| 3 | 4401010805 | MARCHE DE SECURITE AISI 316 | | 18 | 4401011518 | SEAT | |
| 4 | 4401010104 | MARCHE LUXE AISI 316 | | 19 | 4401011519 | ENSEMBLE RACCORD UNION | |
| 5 | 4401010501 | TAMPON ARTICULE | | 20 | 4401011520 | BRIDE DE SUPPORT | |
| 6 | 4401011506 | TAMPON ARTICULE D 28 | | 21 | 4401011521 | TUBE DE SUPPORT | |
| 7 | 4401011507 | PLAQUE SUPPORT DE SIEGE | | 22 | 4401011505 | DOUILLES | |
| 8 | 4401011508 | VANNE 3 VOIES COMPLETE | | 23 | 11277R0600 | CYLINDRE ELEVATEUR | |
| 9 | 4401011509 | JOINT ELEVATEUR | | 24 | 11277R0400 | PROTECTION SIEGE | |
| 10 | 4401070208 | BOUCHON D.43 | | 25 | * 11277R0800 | MAIN COURAGE LARGE L=1000 | |
| 11 | 4401050402 | DOUILLES | | 25 | * 15219R0100 | MAIN COURAGE LARGE L=650 | |
| 12 | 4401011512 | DOUILLE DE SECURITE | | 26 | * 11277R0900 | MAIN COURANTE COURTE L=1000 | |
| 13 | 4401011513 | DOUILLE GUIDE | | 26 | * 15219R0200 | MAIN COURANTE COURTE L=650 | |

* VOIR FICHE D'OBSERVATIONS

CODE **11277, 15219, 28619, 28620, 28621, 28622**

DESCRIPTION: **ÉLÉVATEUR HYDRAULIQUE**

| | | | | | |
|----|------------|--------------------|----|------------|---------------------|
| 14 | 4401011514 | TUBE ENTRÉE 0,9 M. | 27 | 11277R0100 | ENSEMBLE TUBE GUIDE |
| 15 | 4401011515 | SUPPORT VANNE | 28 | 00143 | FIXATION AVEC VIS |

CODE **11277, 15219, 28619, 28620, 28621, 28622**

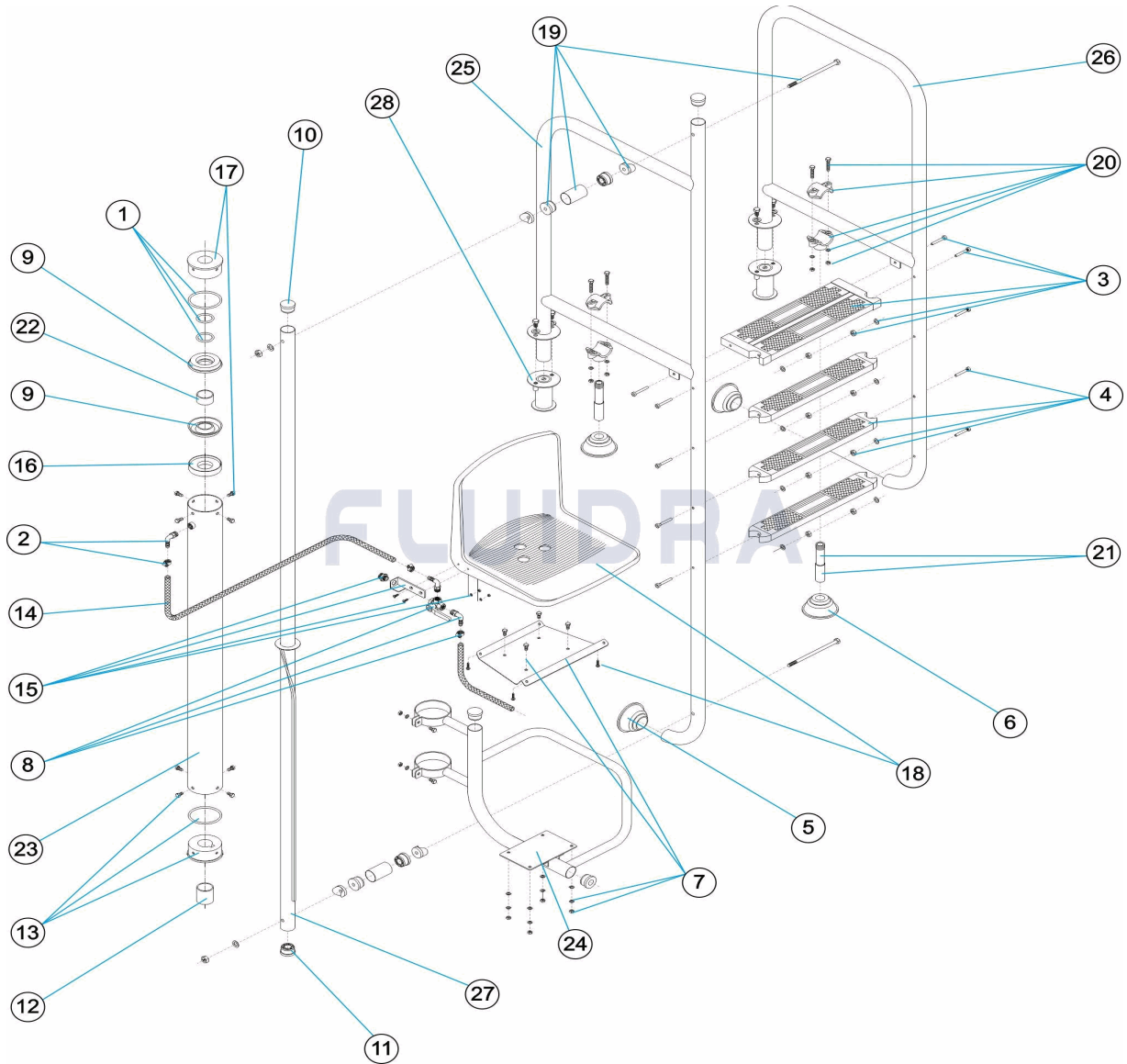
DESCRIPTION: **ÉLÉVATEUR HYDRAULIQUE**

OBSERVATIONS

| POS | CODE | OBSERVATIONS |
|-----|--------------|--------------------|
| 25 | * 11277R0800 | POUR: 11277, 28620 |
| 25 | * 15219R0100 | POUR: 15219, 28619 |
| 26 | * 11277R0900 | POUR: 11277, 28620 |
| 26 | * 15219R0200 | POUR: 15219, 28619 |

CODE 11277, 15219, 28619, 28620, 28621, 28622

DESCRIPTION: HYDRAULIC LIFT



ENGLISH

| POS | CODE | DESCRIPTION | QUANTITY | POS | CODE | DESCRIPTION | QUANTITY |
|-----|------------|---------------------------|----------|-----|--------------|-------------------------|----------|
| 1 | 4401011501 | LIFTER GASKETS | | 16 | 4401011516 | SEAL SUPPORT | |
| 2 | 4401011502 | ELBOW AND FLANGE | | 17 | 4401011517 | SUPERIOR GUIDE COVER | |
| 3 | 4401010805 | SAFETY TREAD 316 | | 18 | 4401011518 | SIÈGE | |
| 4 | 4401010104 | DELUXE TREAD 316 | | 19 | 4401011519 | UNION KIT | |
| 5 | 4401010501 | ARTICULATED FOOT PAD | | 20 | 4401011520 | SUPPORT DASP | |
| 6 | 4401011506 | ARTICULATED FOOT PAD D 28 | | 21 | 4401011521 | SUPPORT PIPE | |
| 7 | 4401011507 | CHAIR PLATE | | 22 | 4401011505 | SOCKETS | |
| 8 | 4401011508 | COMPLETE 3-WAY VALVE | | 23 | 11277R0600 | HYDRAULIC CYLINDER TUBE | |
| 9 | 4401011509 | LIFTER GASKET | | 24 | 11277R0400 | SEAT SUPPORT | |
| 10 | 4401070208 | PLUG D.43 | | 25 | * 11277R0800 | LARGE HANDRAIL L=1000 | |
| 11 | 4401050402 | BUSHES | | 25 | * 15219R0100 | LARGE HANDRAIL L=650 | |
| 12 | 4401011512 | SECURITY SOCKET | | 26 | * 11277R0900 | SMALL HANDRAIL L=1000 | |
| 13 | 4401011513 | GUIDE SOCKET | | 26 | * 15219R0200 | SMALL HANDRAIL L=650 | |

* SEE OBSERVATIONS SHEET

CODE **11277, 15219, 28619, 28620, 28621, 28622**

DESCRIPTION: **HYDRAULIC LIFT**

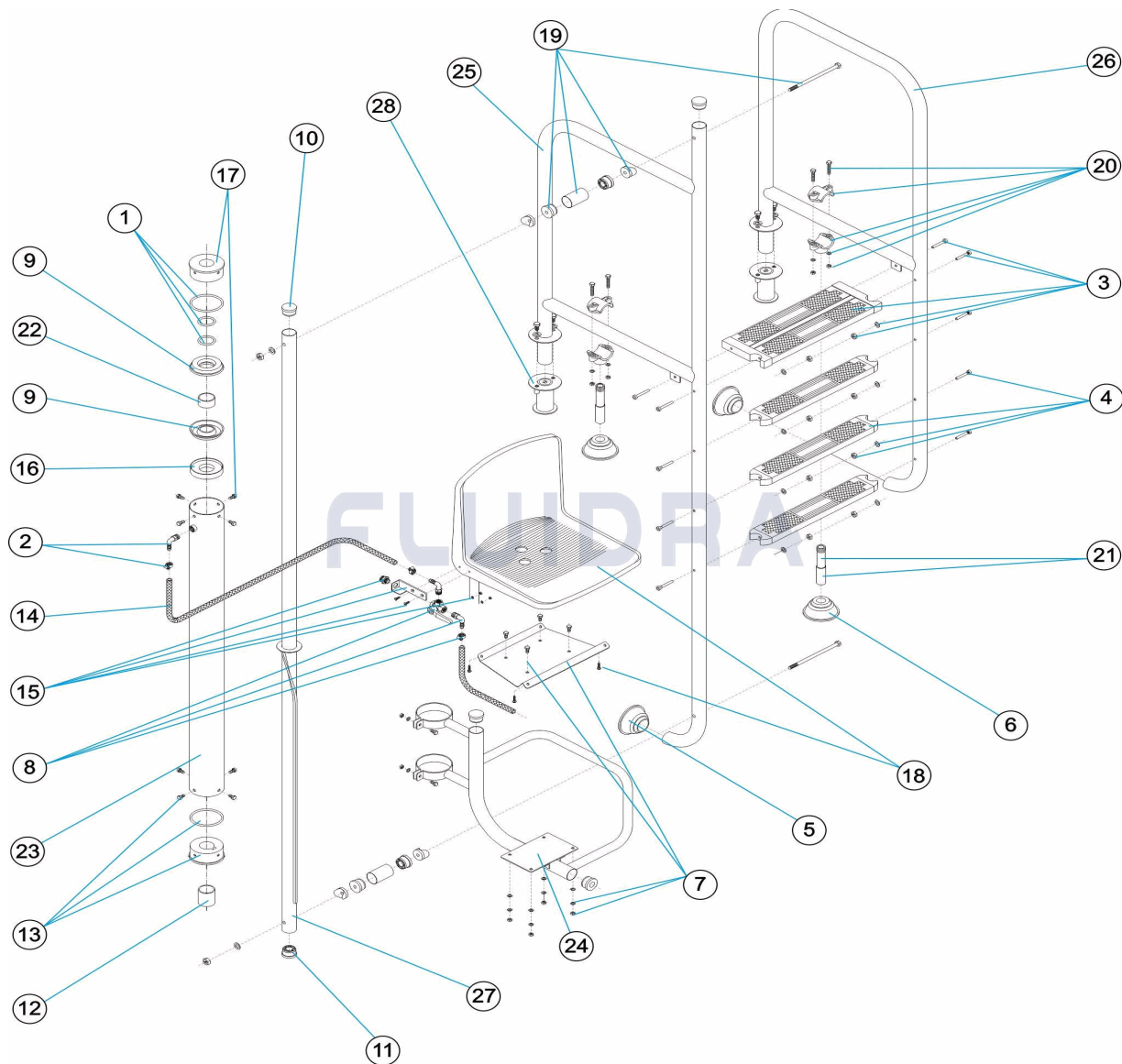
| | | | | | |
|----|------------|---------------|----|------------|-----------------------|
| 14 | 4401011514 | PIPE 0,9 M. | 27 | 11277R0100 | MECHANICAL TUBE |
| 15 | 4401011515 | VALVE SUPPORT | 28 | 00143 | ANCHORING WITH SCREWS |

CODE **11277, 15219, 28619, 28620, 28621, 28622**DESCRIPTION: **HYDRAULIC LIFT****OBSERVATIONS**

| POS | CODE | OBSERVATIONS |
|-----|--------------|-------------------|
| 25 | * 11277R0800 | FOR: 11277, 28620 |
| 25 | * 15219R0100 | FOR: 15219, 28619 |
| 26 | * 11277R0900 | FOR: 11277, 28620 |
| 26 | * 15219R0200 | FOR: 15219, 28619 |

CODICE 11277, 15219, 28619, 28620, 28621, 28622

DESCRIZIONE: ELEVATORE IDRAULICO



ITALIANO

| POS | CODICE | DESCRIZIONE | QUANTITA' | POS | CODICE | DESCRIZIONE | QUANTITA' |
|-----|------------|-------------------------------|-----------|-----|--------------|-------------------------|-----------|
| 1 | 4401011501 | GUARNIZIONI SOLLEVATORE | | 16 | 4401011516 | SUPPORTO GUARNIZIONE | |
| 2 | 4401011502 | GOMITO E FLANGIA | | 17 | 4401011517 | TAPPO GUIDA SUPERIORE | |
| 3 | 4401010805 | GRADINO DI SICUREZZA AISI 316 | | 18 | 4401011518 | SEIDA | |
| 4 | 4401010104 | GRADINO LUXE AISI 316 | | 19 | 4401011519 | KIT ATTACO SEIDA | |
| 5 | 4401010501 | PIEDINO SNODABILE | | 20 | 4401011520 | PRESA A STAFFA SOSTEGNO | |
| 6 | 4401011506 | PIEDINO SNODABILE D 28 | | 21 | 4401011521 | TUBO SOSTEGNO | |
| 7 | 4401011507 | PIASTRA SEGGIOLA | | 22 | 4401011505 | PASSANTI | |
| 8 | 4401011508 | VALVOLA A 3 VIE COMPLETA | | 23 | 11277R0600 | CILINDRO ELEVATORE | |
| 9 | 4401011509 | GUARNIZIONE SOLLEVATORE | | 24 | 11277R0400 | SOSTEGNO SEDILE | |
| 10 | 4401070208 | TAPPO D.43 | | 25 | * 11277R0800 | CORRIMANO LUNGO L=1000 | |
| 11 | 4401050402 | PASSANTI | | 25 | * 15219R0100 | CORRIMANO LUNGO L=650 | |
| 12 | 4401011512 | TAPPO DI SICUREZZA | | 26 | * 11277R0900 | CORRIMANO CORTO L=1000 | |
| 13 | 4401011513 | TAPPO CON GUIDA | | 26 | * 15219R0200 | CORRIMANO CORTO L=650 | |

* SI FACCIA RIFERIMENTO AL FOGLIO DELLE OSSERVAZIONI

CODICE **11277, 15219, 28619, 28620, 28621, 28622**

DESCRIZIONE: **ELEVATORE IDRAULICO**

| | | | | | |
|----|------------|---------------------|----|------------|----------------------------------|
| 14 | 4401011514 | TUBO ENTRATA 0,9 M. | 27 | 11277R0100 | KIT CILINDRO GUIDA |
| 15 | 4401011515 | SUPPORTO VALVOLA | 28 | 00143 | ANCORAGGIO DI FISSAGGIO CON VITI |

CODICE **11277, 15219, 28619, 28620, 28621, 28622**

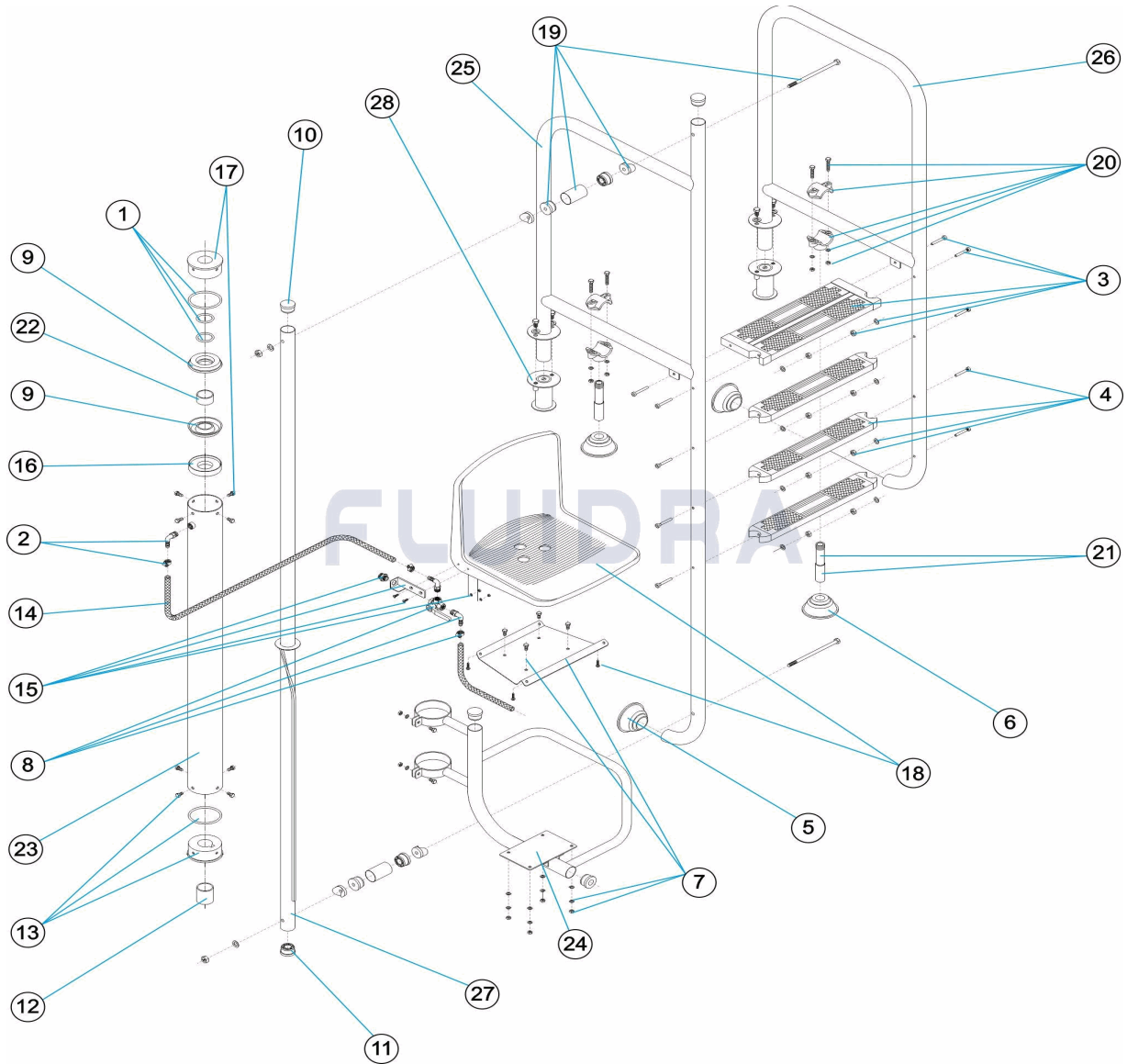
DESCRIZIONE: **ELEVATORE IDRAULICO**

OSSERVAZIONI

| POS | CODICE | OSSERVAZIONI |
|-----|--------------|-------------------|
| 25 | * 11277R0800 | PER: 11277, 28620 |
| 25 | * 15219R0100 | PER: 15219, 28619 |
| 26 | * 11277R0900 | PER: 11277, 28620 |
| 26 | * 15219R0200 | PER: 15219, 28619 |

CODE 11277, 15219, 28619, 28620, 28621, 28622

BESCHREIBUNG: HYDRAULISCHER LIFTER



DEUTSCH

| POS | CODE | BESCHREIBUNG | MENGE | POS | CODE | BESCHREIBUNG | MENGE |
|-----|------------|-----------------------------|-------|-----|--------------|---------------------------|-------|
| 1 | 4401011501 | DICHTUNGEN LIFT | | 16 | 4401011516 | HALTERUNG DICHTUNG | |
| 2 | 4401011502 | WINKEL UND FLANSCH | | 17 | 4401011517 | ABDECKUNG FÜHRUNG OBEN | |
| 3 | 4401010805 | SICHERHEITSSSTUFE 316 | | 18 | 4401011518 | SITZ | |
| 4 | 4401010104 | STUFE LUXE 316 | | 19 | 4401011519 | SET ANSCHLUSSEVERBINDUNG | |
| 5 | 4401010501 | BEWEGLICHER ABSCHLUSS | | 20 | 4401011520 | HILFSFLANSCH | |
| 6 | 4401011506 | BEWEGLICHER ABSCHLUSS D. 28 | | 21 | 4401011521 | HILFSROHR | |
| 7 | 4401011507 | PLATINE SITZ | | 22 | 4401011505 | FASSUNG ABSCHLUSS UNTEN | |
| 8 | 4401011508 | 3-WEGE-VENTIL KOMPLETT | | 23 | 11277R0600 | ZYLINDER LIFT HYDRAULISCH | |
| 9 | 4401011509 | DICHTUNG LIFT | | 24 | 11277R0400 | HALTERUNG SITZ | |
| 10 | 4401070208 | STOPFEN D.43 | | 25 | * 11277R0800 | HANDLAUF LANG L=1000 | |
| 11 | 4401050402 | FASSUNGEN FÜHRUNG | | 25 | * 15219R0100 | HANDLAUF LANG L=650 | |
| 12 | 4401011512 | SICHERHEITSSFASSUNG | | 26 | * 11277R0900 | HANDLAUF KURZ L=1000 | |
| 13 | 4401011513 | FASSUNG FÜHRUNG | | 26 | * 15219R0200 | HANDLAUF KURZ L=650 | |

* SIEHE ANMERKUNGSBLATT

CODE **11277, 15219, 28619, 28620, 28621, 28622**

BESCHREIBUNG: **HYDRAULISCHER LIFTER**

| | | | | | |
|----|------------|--------------------|----|------------|-----------------------------------|
| 14 | 4401011514 | ROHR EINGANG 0,9 M | 27 | 11277R0100 | SET FÜHRUNGSROHR |
| 15 | 4401011515 | HALTERUNG VENTIL | 28 | 00143 | VERANKERUNG FIXIERUNG MIT SCHRAUB |

CODE **11277, 15219, 28619, 28620, 28621, 28622**

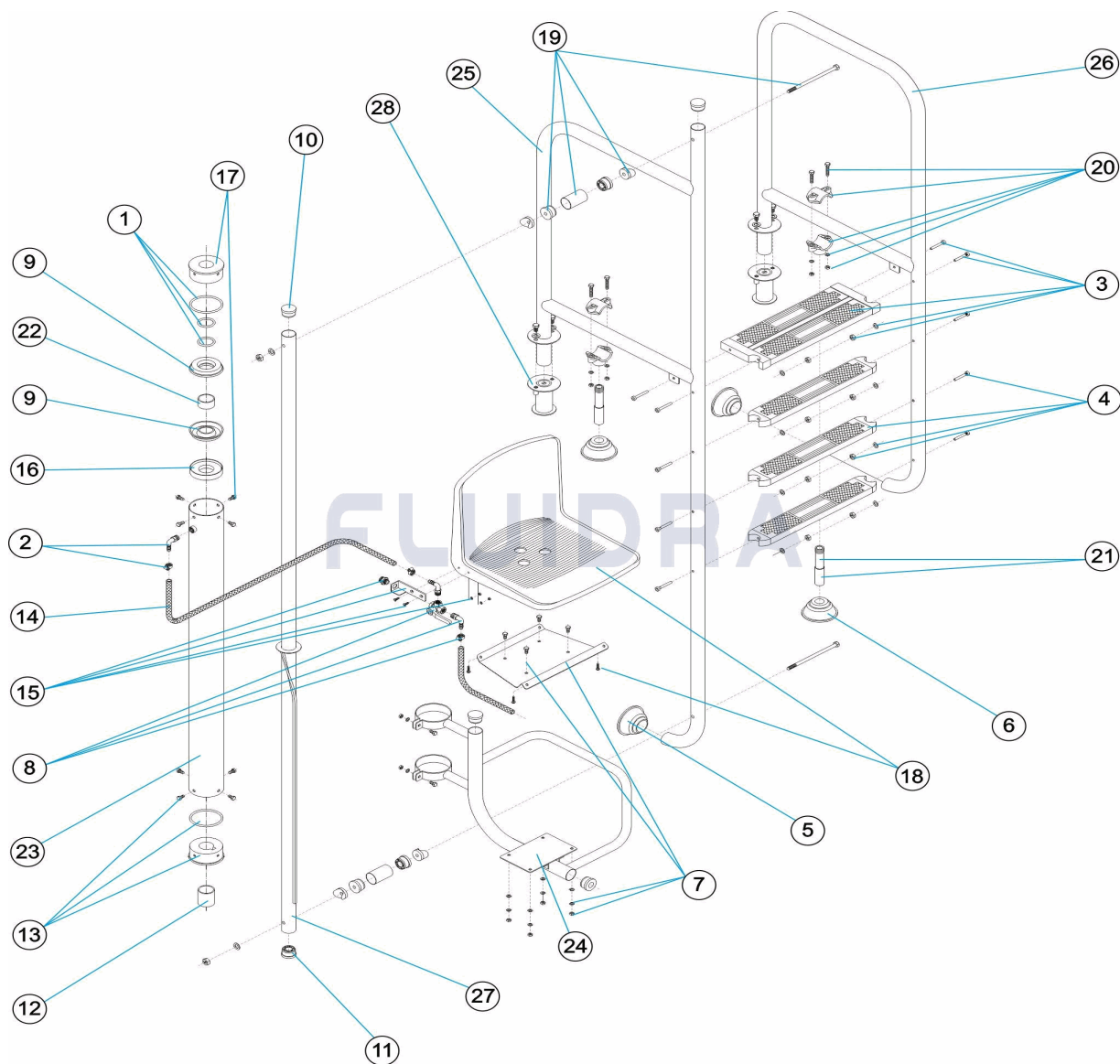
BESCHREIBUNG: **HYDRAULISCHER LIFTER**

HINWEISE

| POS | CODE | HINWEISE |
|-----|--------------|-------------------|
| 25 | * 11277R0800 | FÜR: 11277, 28620 |
| 25 | * 15219R0100 | FÜR: 15219, 28619 |
| 26 | * 11277R0900 | FÜR: 11277, 28620 |
| 26 | * 15219R0200 | FÜR: 15219, 28619 |

CODIGO 11277, 15219, 28619, 28620, 28621, 28622

DESCRICAÇÃO: ELEVADOR HIDRÁULICO



PORTUGUES

| POS | CODIGO | DESCRICAÇÃO | JANTIDADE | POS | CODIGO | DESCRICAÇÃO | JANTIDADE |
|-----|------------|-------------------------|-----------|-----|--------------|--------------------------|-----------|
| 1 | 4401011501 | JUNTAS ELEVADOR | | 16 | 4401011516 | APOIO JUNTA | |
| 2 | 4401011502 | COTOBELO E FLANGE | | 17 | 4401011517 | TAMPA GUIA SUPERIOR | |
| 3 | 4401010805 | DEGRAU SEGURANÇA 316 | | 18 | 4401011518 | CADEIRA | |
| 4 | 4401010104 | DEGRAU LUXE 316 | | 19 | 4401011519 | CONJUNTO UNIÃO LIGAÇÃO | |
| 5 | 4401010501 | BATENTE ARTICULADA | | 20 | 4401011520 | ABRACADEIRA DE APOIO | |
| 6 | 4401011506 | BATENTE ARTICULADA D 28 | | 21 | 4401011521 | TUBO DE APOIO | |
| 7 | 4401011507 | PLACA ASSENTO | | 22 | 4401011505 | CASQUILHOS | |
| 8 | 4401011508 | VALVULA 3 VIAS COMPLETA | | 23 | 11277R0600 | CILINDRO ELEVADOR | |
| 9 | 4401011509 | JUNTA ELEVADOR | | 24 | 11277R0400 | SUPORTE ASSENTO | |
| 10 | 4401070208 | TAMPÃO D.43 | | 25 | * 11277R0800 | CORRIMÃO COMPRIDO L=1000 | |
| 11 | 4401050402 | CONJ. CASQUILHOS | | 25 | * 15219R0100 | CORRIMÃO COMPRIDO L=650 | |
| 12 | 4401011512 | CASQUILHO DE SEGURANÇA | | 26 | * 11277R0900 | CORRIMÃO CURTO L=1000 | |
| 13 | 4401011513 | CASQUILHO GUIA | | 26 | * 15219R0200 | CORRIMÃO CURTO L=650 | |

*** VEJA A FICHA DE OBSERVAÇÕES**

CODIGO **11277, 15219, 28619, 28620, 28621, 28622**

DESCRIÇÃO: **ELEVADOR HIDRÁULICO**

| | | | | | |
|----|------------|---------------------|----|------------|---------------------------------|
| 14 | 4401011514 | TUBO ENTRADA 0,9 M. | 27 | 11277R0100 | CONJUNTO TUBO GUÍA |
| 15 | 4401011515 | SUPORTE VÁLVULA | 28 | 00143 | ANCORAGEM FIXAÇÃO COM PARAFUSOS |

CODIGO **11277, 15219, 28619, 28620, 28621, 28622**

DESCRIÇÃO: ELEVADOR HIDRÁULICO

OBSERVAÇÕES

| POS | CODIGO | OBSERVAÇÕES |
|-----|--------------|--------------------|
| 25 | * 11277R0800 | PARA: 11277, 28620 |
| 25 | * 15219R0100 | PARA: 15219, 28619 |
| 26 | * 11277R0900 | PARA: 11277, 28620 |
| 26 | * 15219R0200 | PARA: 15219, 28619 |